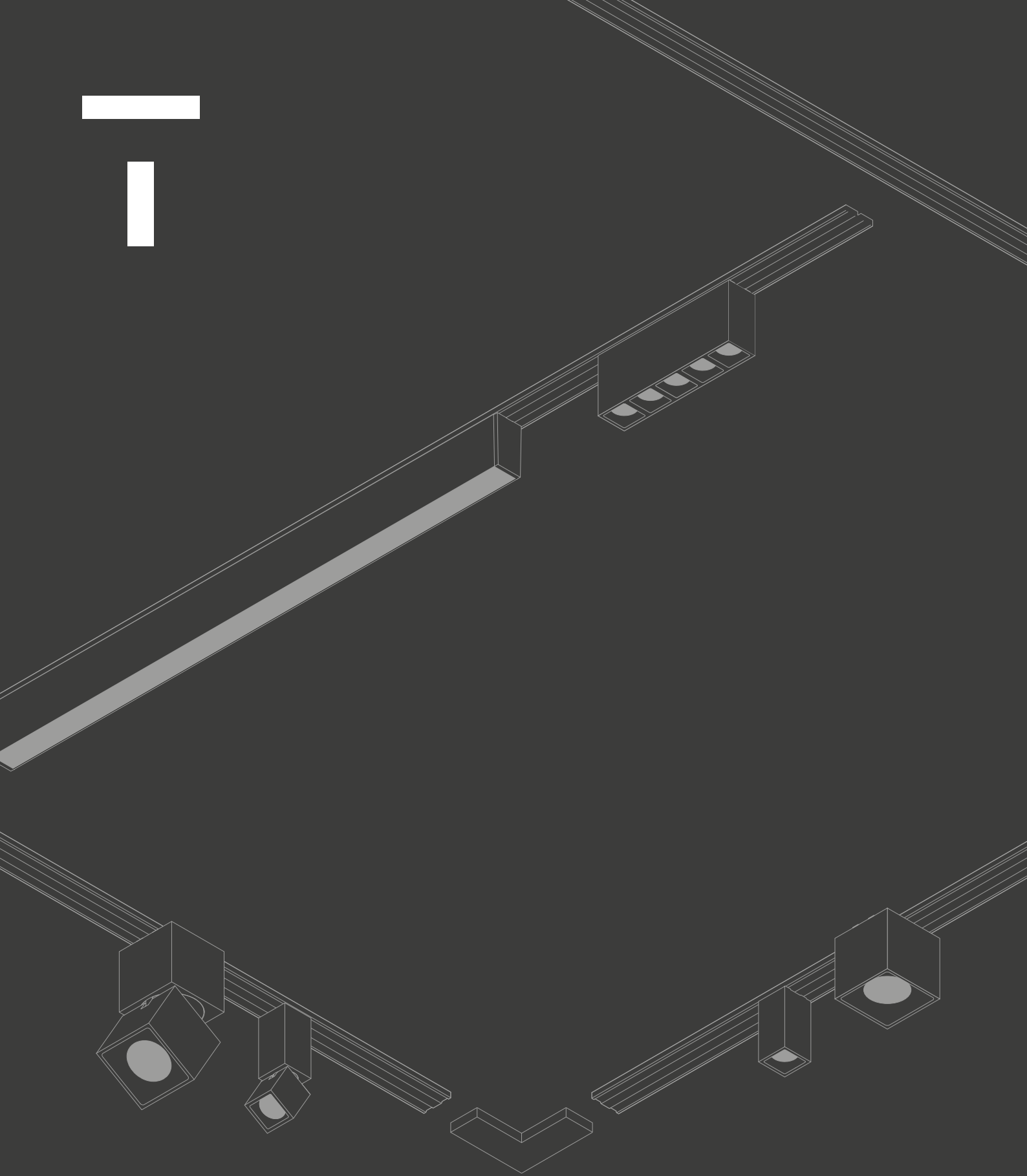


T



OZ



small is the new big

OZ was designed with a desire for freedom, a desire to experiment with new shapes and geometries, it was created to bring light everywhere with extreme simplicity and total lightness.





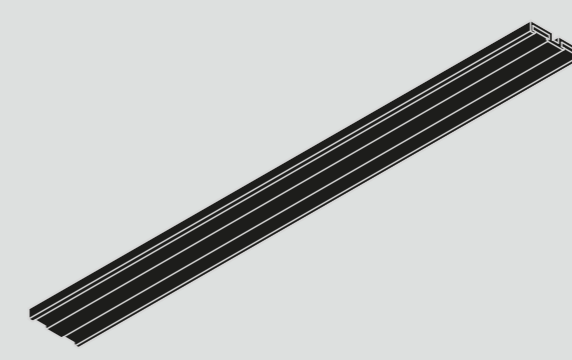
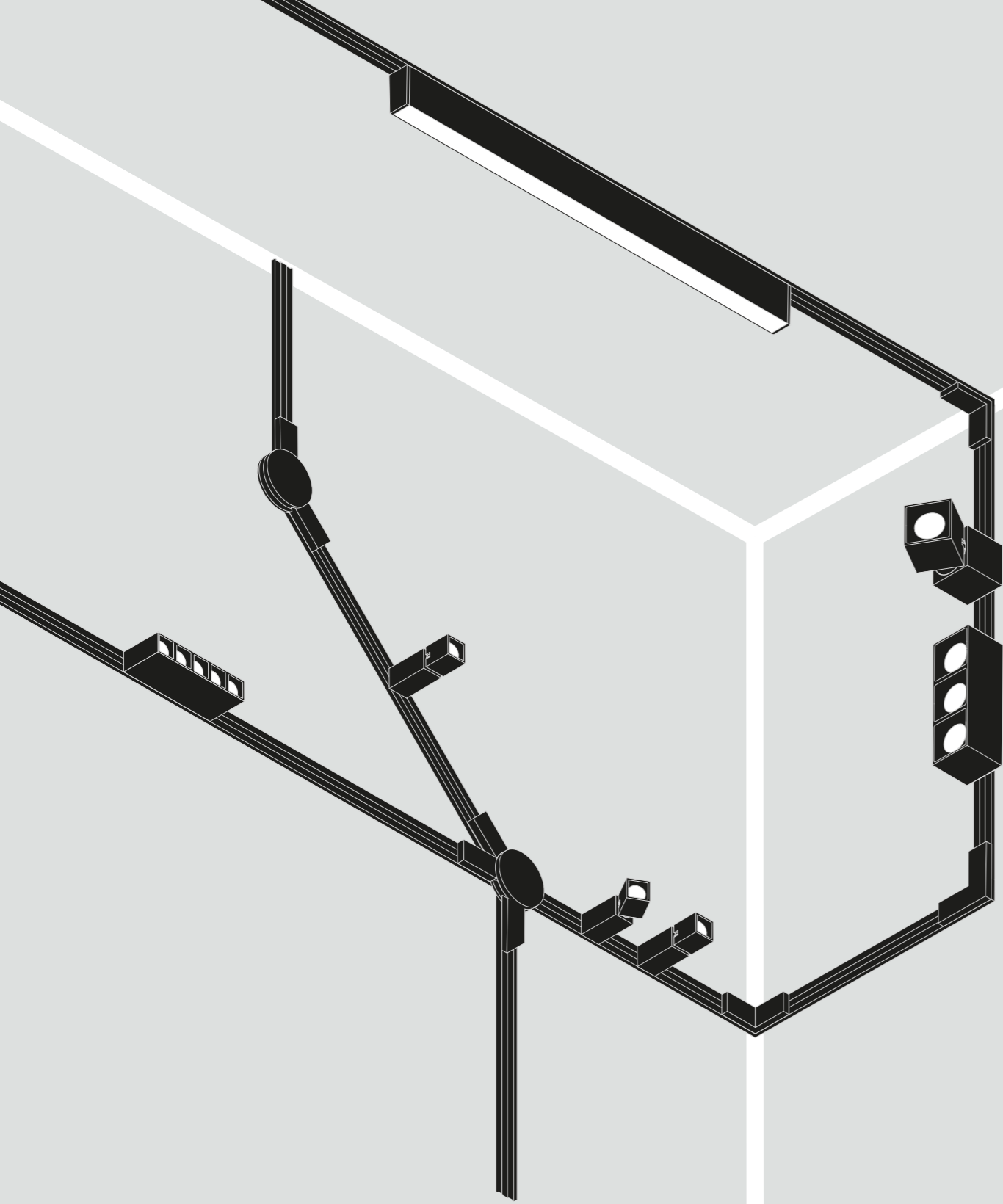
It moves around space like a pencil mark free flowing on a piece of paper, precise and defined that takes shape in thin modular elements that can be configured in infinite ways both on ceilings and walls. Light joins it with the utmost naturalness; minuscule light points can be attached at any point using the force of magnets, allowing for millimetric precision and the possibility to change solutions at any time.



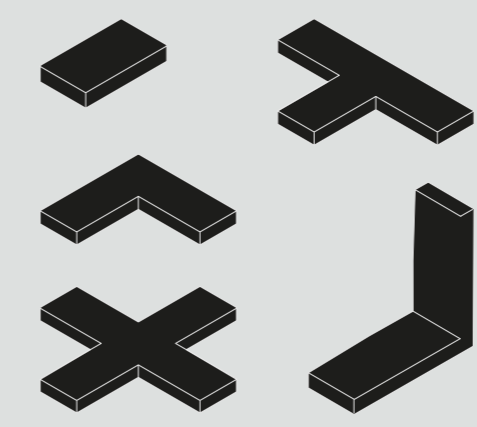
The system is made of an advanced 6 mm thick conductive track that winds through space carrying a 48V current on which light units can be attached. Different connectors can be installed on the power track using simple magnets making it possible to combine different modules easily and simply.



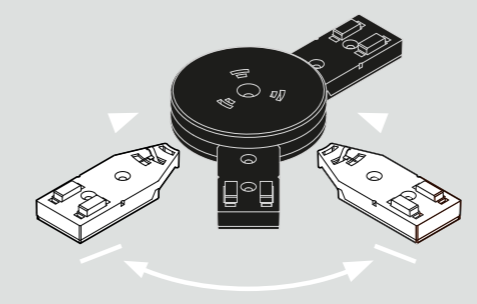
The power tracks are available in both black and white and in three different lengths.



The 6mm power track makes it possible to create ambitious geometries between the ceiling and wall with complete elegance and discretion.



Power tracks can be connected together with different types of magnetic connectors that make it possible to create new luminous geometries. Just install the power tracks in a row and attach the different power track connectors



The adjustable connector makes it possible to connect power tracks easily: every connector can connect from 2 to 8 power tracks to create free angles between "right" angles (minimum 45° angle).

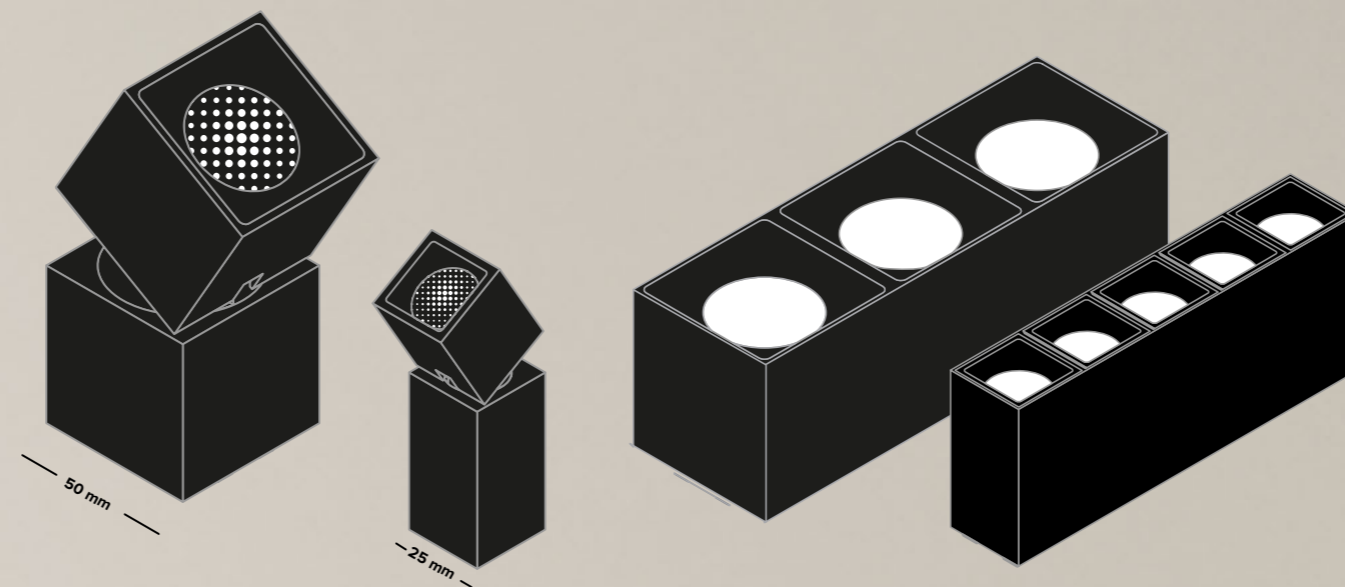


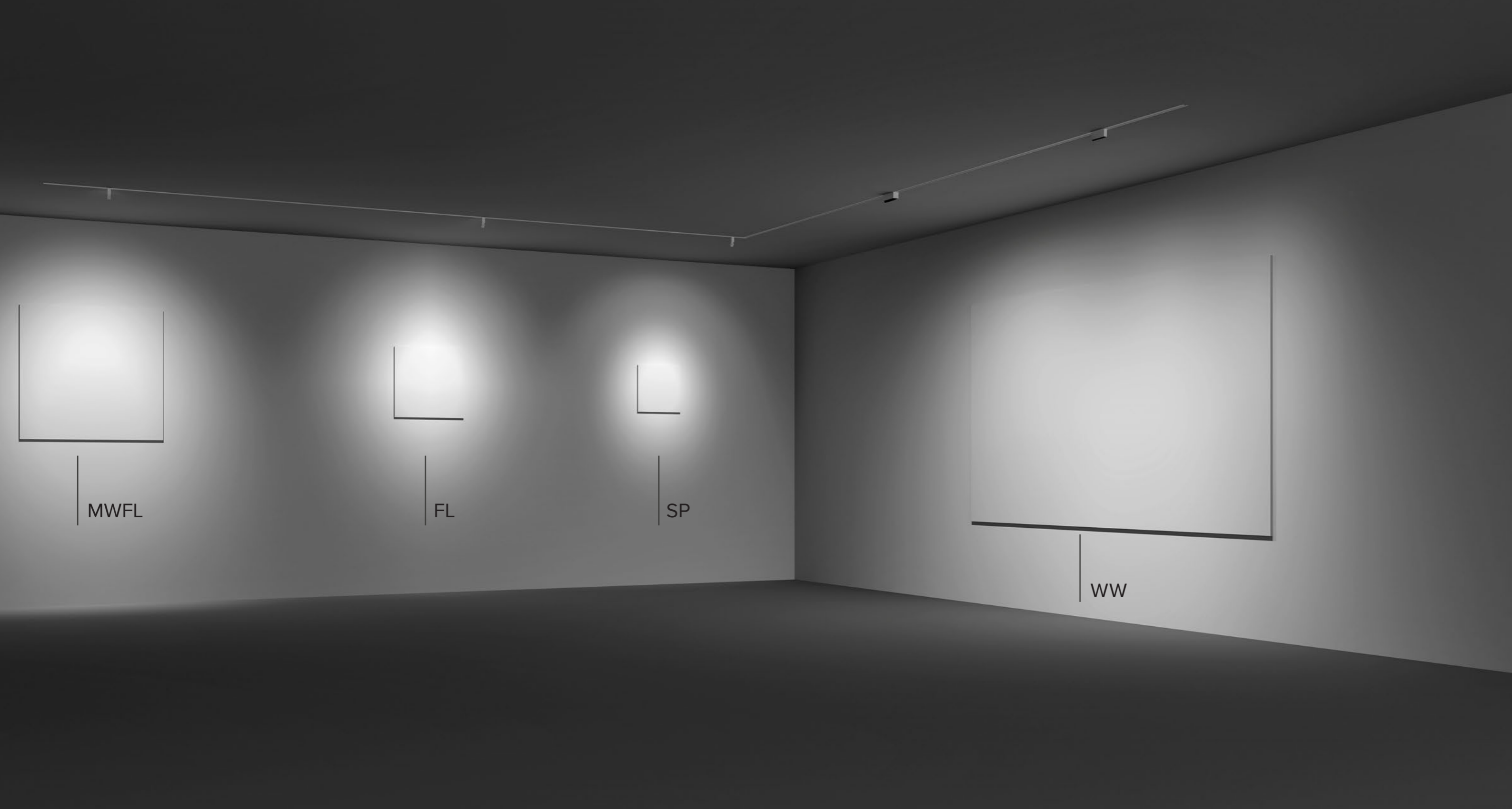
Every element in the system is independent and can be positioned anywhere on the power track, to provide light where it is needed.



All the light units have magnetic couplings: this makes it possible to attach and detach the light unit from the power track at any point extremely easily and simply.

The modules are available in two different sizes, SMALL and LARGE, with single, multi-optic and linear units, to provide a complete range of lighting effects.





MWFL

FL

SP

WW

All light units are equipped with Ra90 LED sources.
The single or multiple units have polycarbonate lenses for precise and defined lighting effects.
The linear and wall washer units have optical systems specifically designed and developed to optimize the LED source to the full to produce highly professional lighting effects.



The Wall washer optical system is designed to provide uniform distribution on the wall.

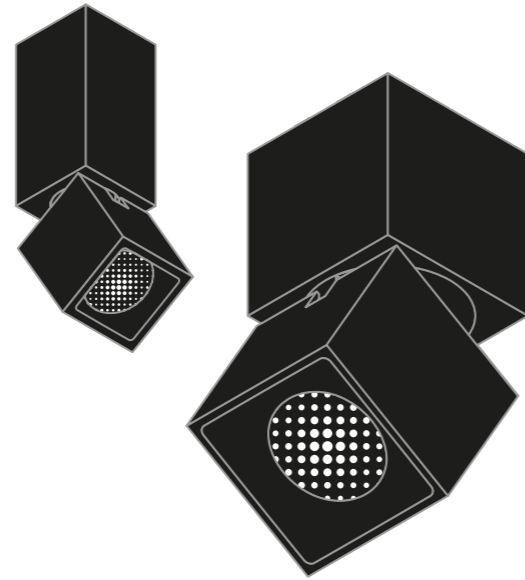
The LARGE version allows for up to 150cm of distance between two light points and a distance of around 90cm from the wall to be lit.

DBS Optics

The beam can be adjusted from SP to MWFL with the same light unit.



opening from 15° to 45°



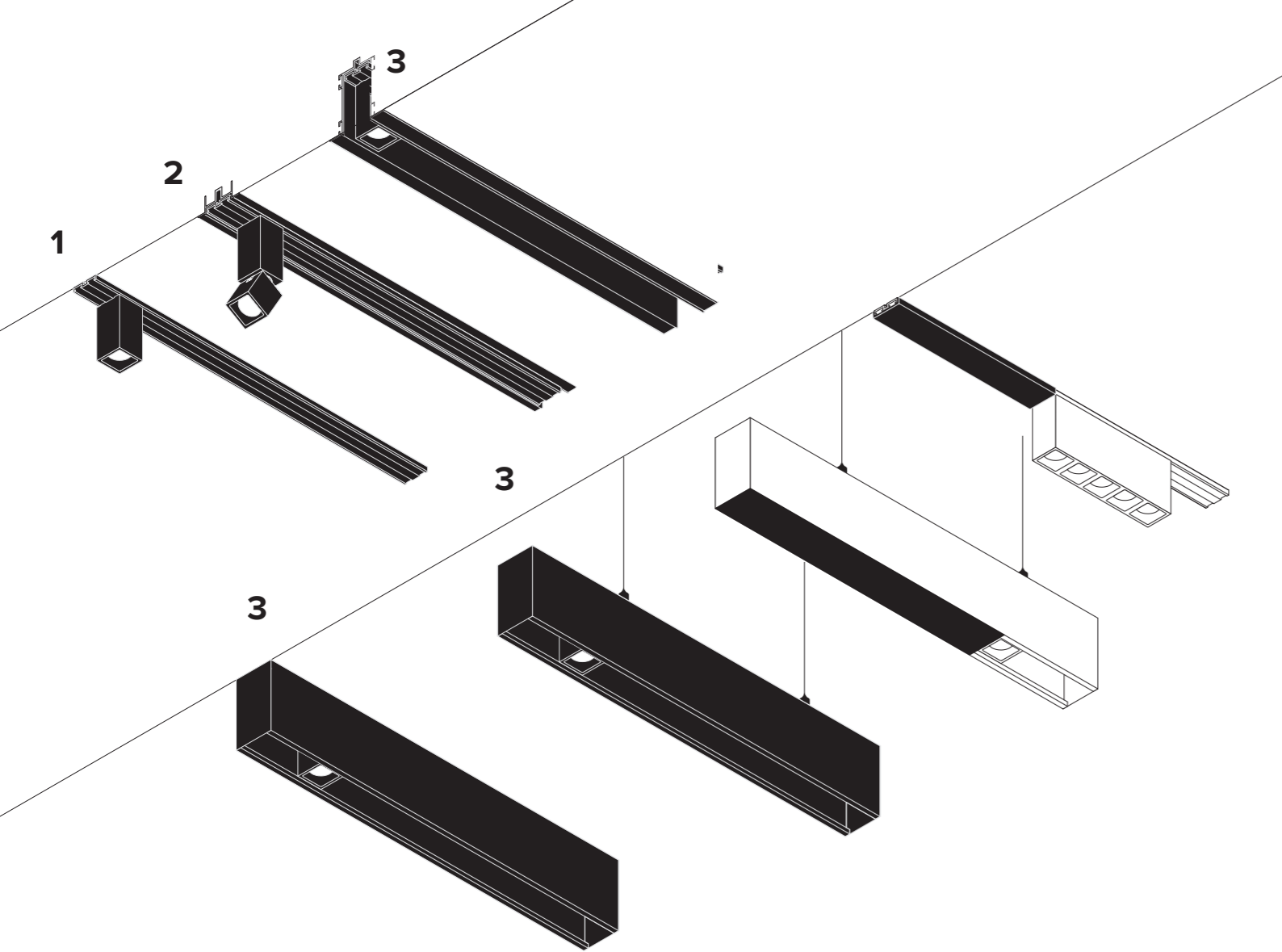
The large and small single light units are available with a DBS optical system that makes it possible to digitally adjust the beam angle from 5° to 45° using the free Casambi App that is compatible with IOS or Android.

This makes it possible to adjust the lighting effect of an environment at any time directly from a smartphone.



Scan the QR code and try the simulation





1

The power track can be installed directly on the wall and ceiling or housed in special profiles that allow for free-standing, recessed or suspended installation.

2

It is also possible to recess the power track on existing false ceilings using a special profile which only impacts the plasterboard panel and not the metal frame.

3

When it is possible to recess the power track can be accessorised with a fully recessed profile to achieve a minimal effect .

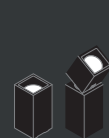




Magnetic system

Light modules

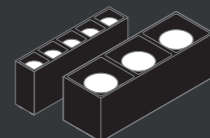
Single



Fixed and adjustable
Small

25x25mm

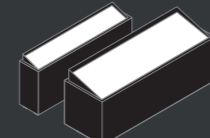
Multiple



Fixed and adjustable
Large

25x125mm
50x150mm

Wall Washer



Small / Large

25x125mm
50x150mm

Linear

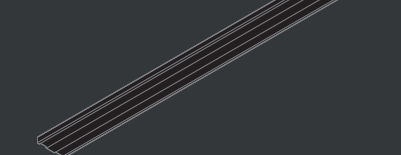


Small

L=569mm and L=869mm

Electrical elements

Power track



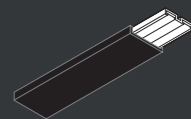
L=1/2/3m • 48V DC
*To be completed with special end caps

Electrical connectors

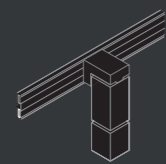


Linear L, T, X connectors and orthogonal and adjustable connectors

Accessories

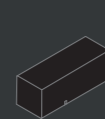


Cover

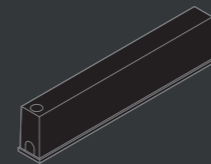


L shaped support

Power supply



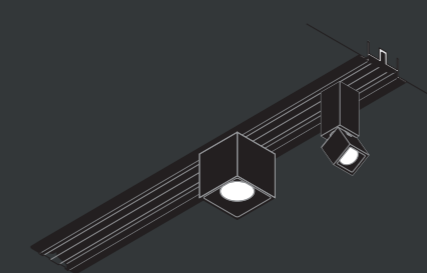
Power head for remote driver



Driver on board

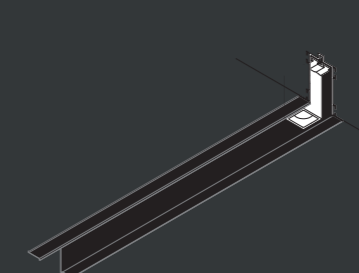
Installation solutions

Recessed for power track



L=1/2/3m

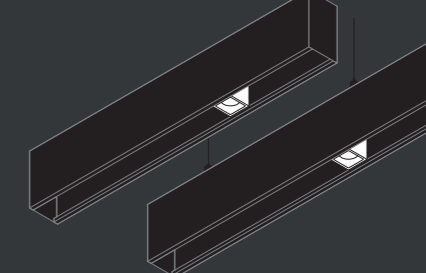
Recessed



Profiles for Small modules
Profiles for Large modules

L=1/2/3m
*To be completed with special end caps

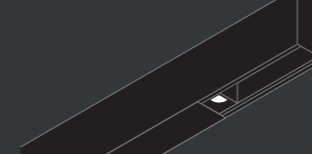
Ceiling and suspension



Profiles for Small modules
Profiles for Large modules

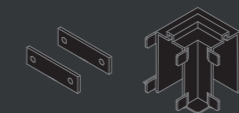
L=1/2/3m
*To be completed with special end caps

Accessories



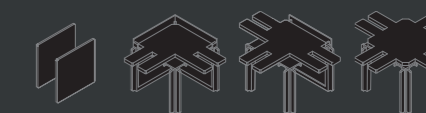
Cover for Small profile modules
and cover for Large modules

Recessed accessories



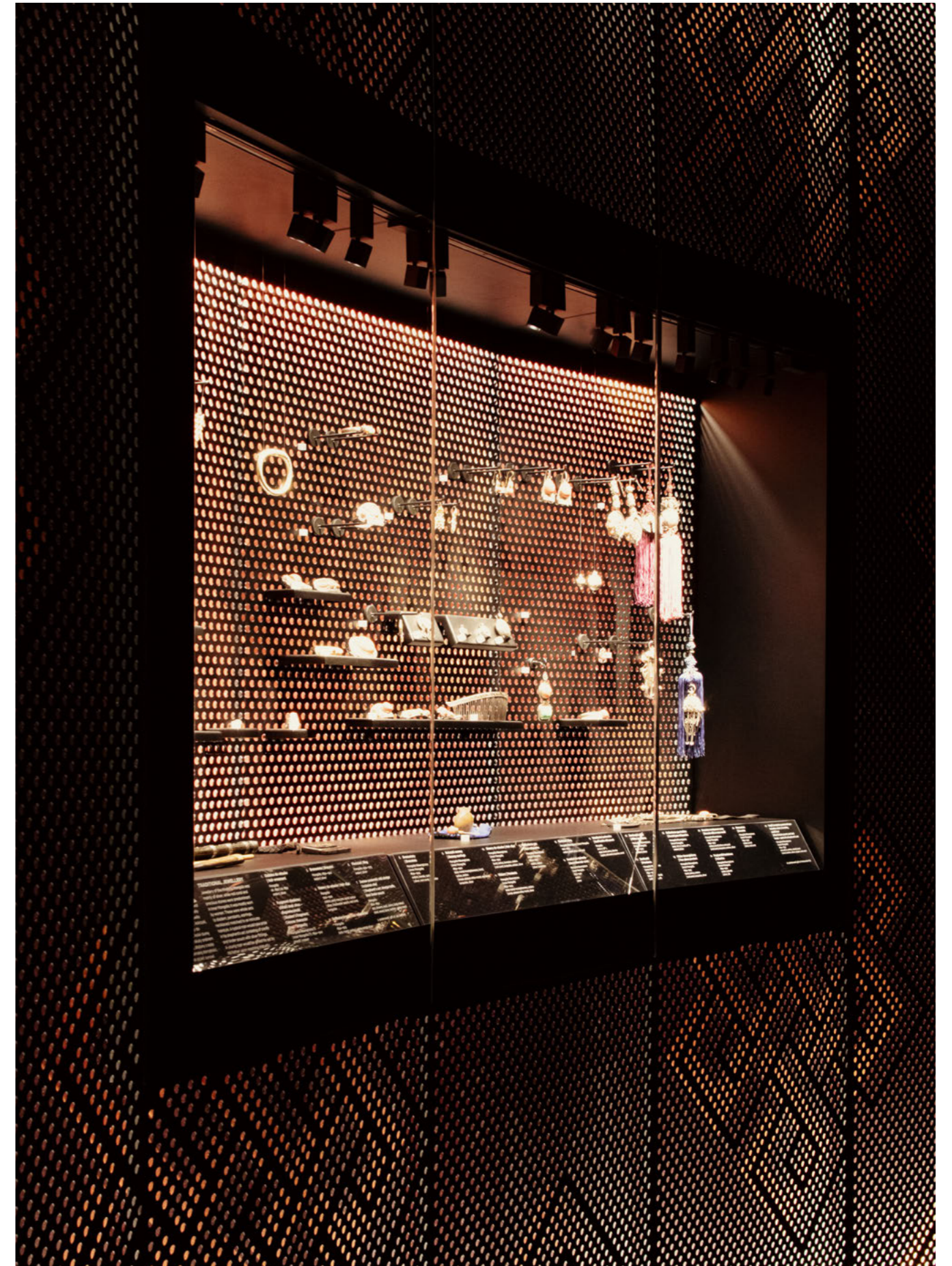
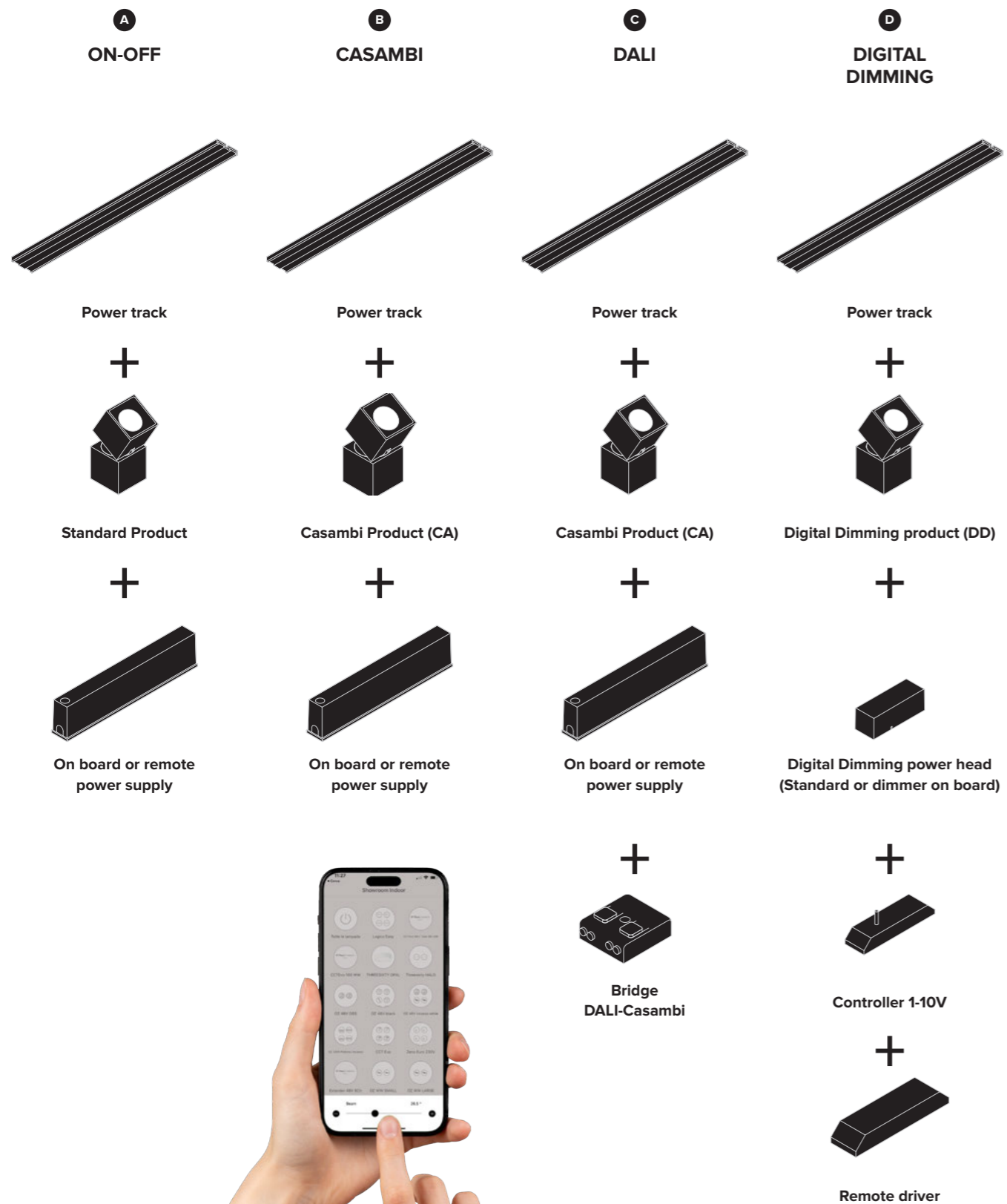
Linear mechanical
and L shaped connectors

Ceiling and suspension accessories



Linear mechanical
L, T and X shaped connectors

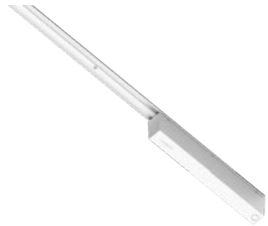
Different control options for the OZ light units adapt to all design needs.



OZ can be powered in different ways starting with the choice to have on board drivers attached directly to the track or positioned nearby.

1

Direct installation on the power track with an on board driver box



4

Installation on a recessed profile with an on board driver box



7

Installation on a ceiling profile with a remote driver and a power head positioned on the power track



2

Direct installation on the power track with a remote driver and a power head



5

Installation on a recessed profile with a remote driver and a power head positioned on the power track



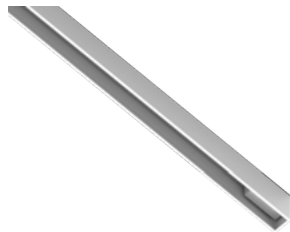
8

Installation on a suspension profile with an on board driver box



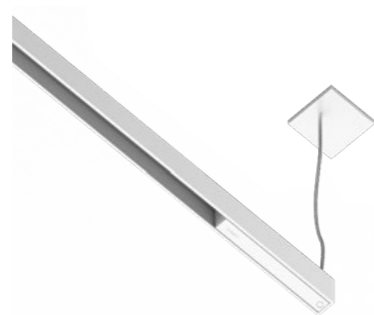
3

Direct installation on the power track with an on board driver box positioned in the centre between two power tracks



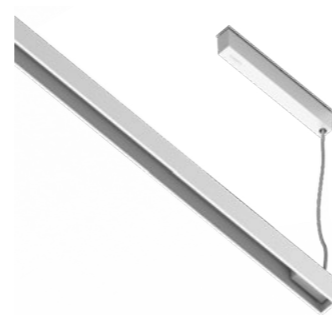
6

Installation on a ceiling profile with an on board driver box



9

Installation on a suspension profile with a ceiling driver box and a power head positioned on the power track





The compact size of the track and the light units combined with the high quality LED light sources and the wide variety of optics, also makes OZ suitable for use in museum environments.

Useful for lighting display cases, small objects and jewellery.



OZ is also available in a single or multi-optic 3x and 5 x stand alone version both for recessed and ceiling installation.

Targetti Sankey S.r.l.

Via Pratese 164
50145 Firenze, Italia

Phone 055 37911
Fax 055 3791 266
targetti@targetti.com
www.targetti.com

Customer Care
customer@targetti.com

Customer Service
technical@targetti.com

Lighting Consulting
project@targetti.com

Graphic design
Marketing division

TARGETTI